

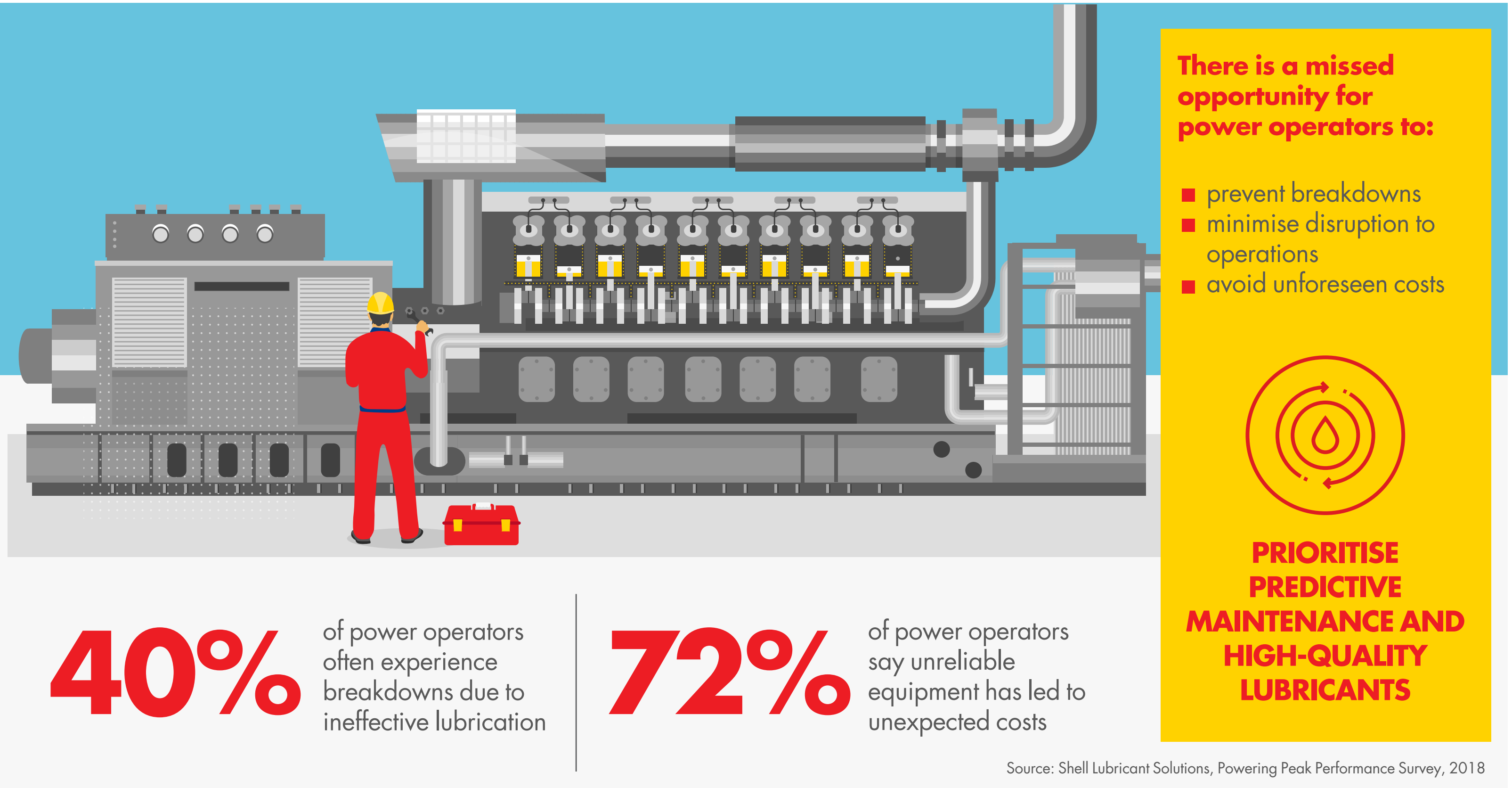
POWERING NEXT-GENERATION GAS ENGINES WITH SHELL MYSELLA S7 N ULTRA



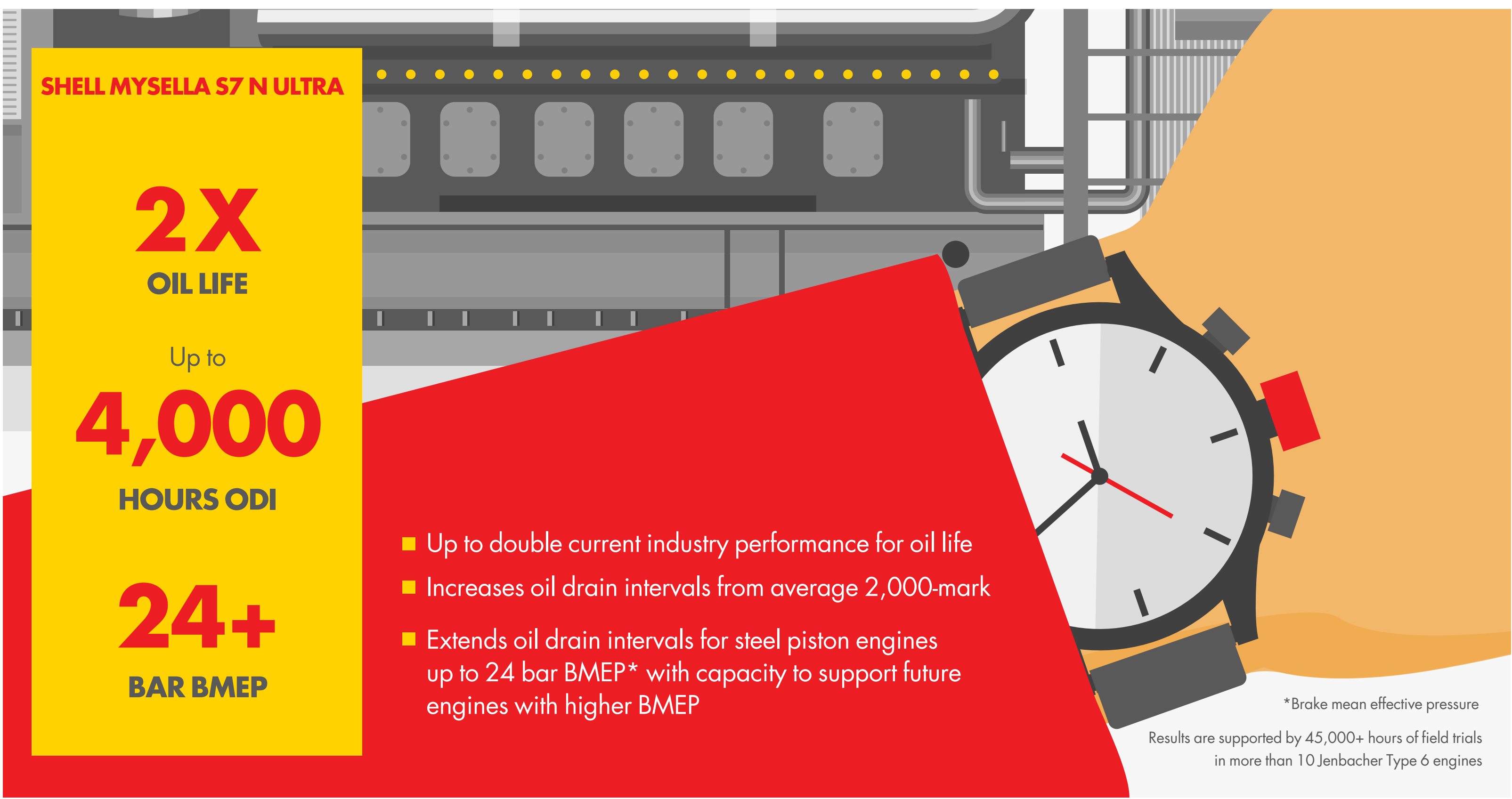
The rising global demand for power is driving the ongoing evolution of stationary gas engines. However, the more powerful the engine, the more extreme the operating conditions.

Shell developed high-performance oil **Shell Mysella S7 N Ultra** to help safeguard the efficiency, help ensure the reliability and meet the considerable demands of next-generation stationary gas engines. Helping to generate the power we need to keep the lights on.

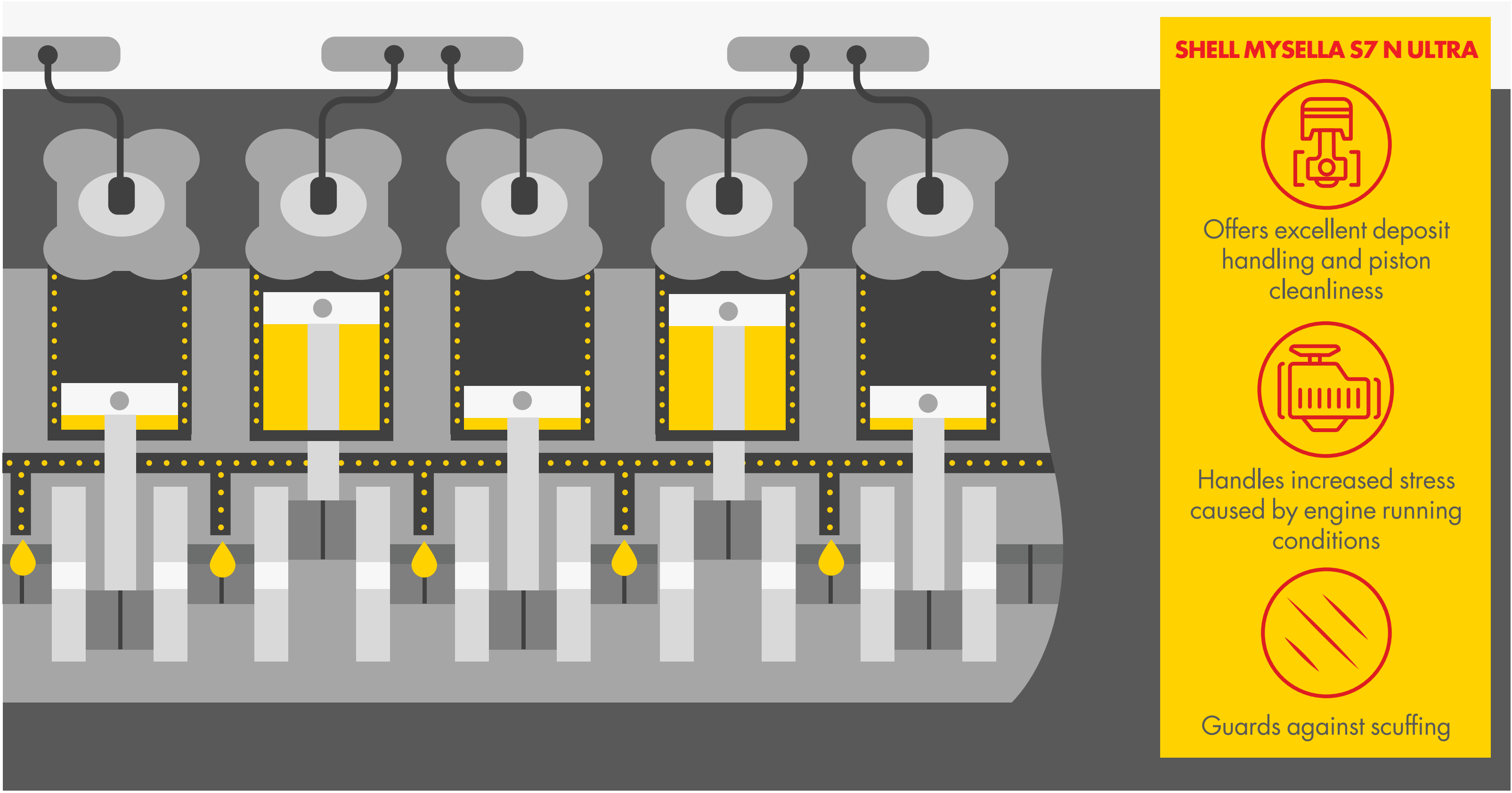
WHY MAINTENANCE AND LUBRICATION MATTER



ULTRA-EXTENDS OIL LIFE



PROTECTS COMPONENTS



REDUCES DOWNTIME



HELPS TO BOOST BOTTOM LINE



WHY CHOOSE SHELL MYSELLA S7 N ULTRA?



Safeguards efficiency and withstands higher stress in extreme operating conditions



Enables operators to maximise power production to help meet growing customer demand



Helps plant owners to optimise operations and better future-proof their business